

# TECHNICAL DATA SHEET



CLT 130 / CMT 260 / CHT 450 >

HAND TOOL FOR PLASTIC STRAPPING



## FEATURES

### CLT 130 / CMT 260 / CHT 450

- Full touch user interfaced for easiest adjustment of parameters and tool status information for operator
- Variable tension speed controlled by finger pressure for sensitive packages
- Favorite strapping function for quick on touch switch of tool settings for varying packages
- Strap alignment indication to ensure that strap is inserted correctly for higher process security

### Technical Data Sheet

Umreifungsgerät	CLT 130	CMT 260	CHT 450
Operation mode	auto / semi / manual	auto / semi / manual	auto / semi / manual
Tension force range standard	400–1200 N	900–2500 N	1300–4500 N
Tension force range soft	150–750 N	400–1360 N	400–1600 N
Variable tension speed range	0–290 mm/s	0–220 mm/s	0–120 mm/s
Weight (incl. battery)	3,6 kg	3,8 kg	4,3 kg
Dimension (L x W x H)	370 x 141x 135 mm	370 x 141x 135 mm	370 x 143x 135 mm
Working temperature	-10 °C to +40 °C	-10 °C to +40 °C	-10 °C to +40 °C
Relative humidity	Up to 90%	Up to 90%	Up to 90%
Battery / Charger	Battery / Charger	Battery / Charger	Battery / Charger
Charger type	Bosch	Bosch	Bosch
Battery charger voltage	100 or 110 or 230 V	100 or 110 or 230 V	100 or 110 or 230 V
Charging time	15–30 min	15–30 min	25–35 min
Battery type	Bosch Li-Ion 18 V, 2,0 Ah	Bosch Li-Ion 18 V, 2,0 Ah	Bosch Li-Ion 18 V, 4,0 Ah
Cycles per battery charge			
• Low tension	800	800	800
• Medium tension	600	400	500
• High tension	400	200	300
Strap	Strap	Strap	Strap
Strap	PET (Polyester), PP (Polypropylen)	PET (Polyester), PP (Polypropylen)	PET (Polyester), PP (Polypropylen)
Width	9–10, 12–13 mm	12–13, 15–16 mm	15–16, 18–19 mm
Thickness	PET 0,4–0,8 mm	0,5 - 1,0 mm	0,8–1,3 mm
	PP 0,5–0,8 mm	0,5 - 1,0 mm	0,5 - 1,0 mm
Ausstattung	Ausstattung	Ausstattung	Ausstattung
Real time indication of applied tension force	•	•	•
Variable tension speed	•	•	•
Favorite strapping function	•	•	•
Display color indication for tool status information	•	•	•
Strap alignment indication	•	•	•
Strap dust blow out vent	•	•	•
Battery protection	•	•	•
0–Tension welding	•	•	•

## ACCESOIRES

CLT 130 / CMT 260 / CHT 450

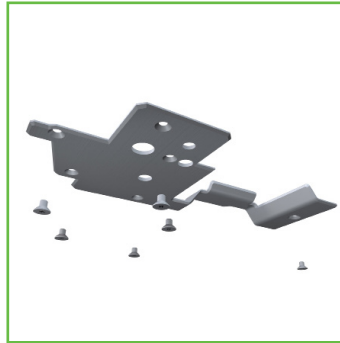
### → User Interface cover

For additional protection in harshest enviroment



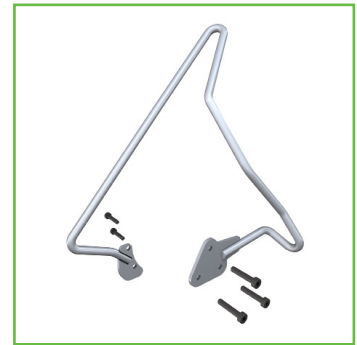
### → Protection plate

For usage on abrasive surface



### → Suspension bow

For stationary applocation



### Strap alignment indication

Less operating errors

- Avoidance of malfunctions during tensioning/welding/cuttingprocesses
- Avoidance of low seal quality (increased seal quality)

### Full Touch Display

Easy to use

- Favorite mode, display lock
- Welding time settings
- Tension force settings
- Operation mode settings

### Real time indication of tension force

Higher process reliability and less errors

- Indication of the tension and the selected tension force (filled out bars)
- Shows operator the true tension force during tensioning process

### 3-colour info display & acoustic signal

Increased seal quality

- FullTouchDisplayandmoreinformation during tensioning/welding/cutting
- Finished strapping process directly visible and audible

### Variable tension speed

Simplified operation and higher reliability

- Slow start-up for arranging packaged goods / fixing up edge protectors
- Inching operation (Cautious approach to correct tension force for the product)

### Favorite strapping function

Simplified and quicker operation

- For various recurring packaged goods, with different setting requirements (heavy/light)
- For the use of different straps PP / PET



Subject to Modification. © Cyklop GmbH, Cologne, Protective notice pursuant to ISO 16016 to be observed. KS05.2017

[WWW.CYKLOP.NL](http://WWW.CYKLOP.NL)

DIRECT CONTACT: +1 (0)38 4675800

CYKLOP B.V.  
Benjamin Franklinstraat 5  
8013 NC Zwolle  
The Netherlands  
[info@cyklop.nl](mailto:info@cyklop.nl)

